

# 2021 PRODUCE SHOW ENTRY FORM

bring form with exhibits to Hose Village Hall

<b>Exhibitor Name</b>	
<b>Address</b>	

Exhibitor No.	
No. of Entries	

Class No	Description	No of entries
<b><i>Fruit &amp; Vegetables</i></b>		
1	Potatoes - white	
2	Potatoes - coloured	
3	Shallots	
4	Onions	
5	Runner Beans	
6	French Beans	
7	Carrots	
8	Beetroot	
9	Lettuce	
10	Cucumber	
11	Tomatoes	
12	Cherry Tomatoes	
13	Courgettes	
14	Vegetable Marrows	
15	Other Vegetable - one type	
16	Runner Bean - longest	
17	Vegetable - heaviest	
18	Amusing Fruit or Vegetable	
19	5 Different Vegetables	
20	Apples - dessert	
21	Apples - cooking	
22	Stoned Fruit	
23	Other Fruit - one type	
24	Picked Herbs - in water	

Class No	Description	No of entries
<b><i>Flowers</i></b>		
25	Asters	
26	Dahlias	
27	Roses	
28	Other Flower - one type	
29	Pot Plant - foliage/flower	
30	Arrangement-in a jam	
31	Arrangement-'Holiday Dreams'	
32	Arrangement- 'Dining 'Al Fresco''	
<b><i>Homecraft</i></b>		
33	Your Favourite Cake	
34	Dundee Cake	
35	Sponge Cake	
36	Decorated Cup Cakes	
37	Scones	
38	Shortbreads	
39	Jam Tarts - shortcrust	
40	Homemade Bread	
41	Quiche - any filling	
42	Jar of Jam	
43	Jar of Fruit Jelly	
44	Jar of Fruit Curd	
45	Jar of Marmalade	
46	Jar of Chutney	
47	Home-made Drink	

Class No	Description	No of entries
<b><i>Handicrafts &amp; Hobbies</i></b>		
48	Original Poem	
49	Painting or Drawing	
50	Photographic Portrait	
51	Other Photograph	
52	Any Woollen Article	
53	Any Needlecraft Article	
54	Any Handicraft article	
55	Any other Hobby Item	
<b><i>Children - 7 and under</i></b>		
56	An animal house	
57	Animal mask made from a paper plate	
58	Coconut Ice - recipe	
59	Any Hobby Exhibit - up to 7 yrs	
<b><i>Children - 11 and under</i></b>		
60	Animal made from Vegetables	
61	Design a flag for Hose	
62	Flapjack - recipe below	
63	Any Hobby Exhibit - up to 11 yrs	
<b><i>Children - 16 and under</i></b>		
64	Space rocket	
65	Original Poem	
66	Any Baked Item	
67	Any Hobby Exhibit - up to 16yrs	
68	Sunflower - tallest plant	
69	Sunflower - largest flower	

Enquiries to Helen Cheetham - 01949 860350, Mobile 07711 022423,  
email helencheetham@clippasafe.co.uk



# Produce & Craft Show

## Sun 5th Sept

### at Hose Village Hall

Entry Forms & Schedules from Hose Shop or [www.hosevillage.org.uk](http://www.hosevillage.org.uk)

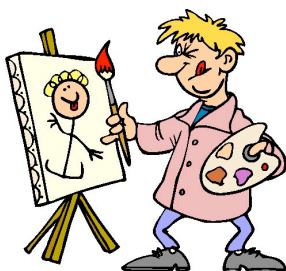
**ENTRIES** to the Hall 8.30-11.00 a.m.

**VIEWING** 2.00 p.m.

**PRESENTATION OF PRIZES** 3.00 p.m.

**SALE of PRODUCE** 3.15 p.m.

Refreshments available



Admission £2  
Children Free

# Hose Produce & Craft Show

## Guidance Notes to Exhibitors

### General

- ◆ Read the Schedule and Rules carefully to ensure that your entries comply. Your entry may not be judged if it does not comply
- ◆ Ensure that you adhere to any restriction or size given for your class
- ◆ All exhibits should be clean and hygienic
- ◆ The judges may cut and/or taste certain exhibits

### Fruit & Vegetables

- ◆ Exhibits should be cleaned of soil and decaying leaves.
- ◆ Wash carefully but do not scrub or polish
- ◆ Trim foliage & stalks of root vegetables according to the Schedule
- ◆ Onions & Shallots: remove very loose skin and tidy roots, but do not overskin; tie the tops with uncoloured twine. Stand shallots on sand
- ◆ Sweetcorn: pull down the husks to expose grains; tuck in the husks
- ◆ Stalks & eyes of fruit should be intact; skin should be free of blemishes

### Flowers

- ◆ Keep to the number of blooms stipulated; ensure they conform to size restrictions (if any)
- ◆ Remove faded flowers or foliage
- ◆ Select flowers & stems of a uniform size
- ◆ Ensure that Flower Arrangements can be viewed from all sides

### Homecraft

- ◆ The taste of preserves is very important in their judging
- ◆ Jars and lids should not have any commercial labelling
- ◆ Jars should be sealed with a lid or cover
- ◆ Jars should be labelled with contents and exact date
- ◆ Pickles should be at least 3 months old to allow the flavour to mature
- ◆ Homemade drink should be in a clear bottle with an easily removed stopper or cork

### Hobbies

- ◆ Exhibits must be new and unused; they should not have been exhibited previously
- ◆ In order to maximise display area, photographs may be fixed to the wall with Blu-Tac. If you are not happy with this, inform the committee.

### Young Persons' Entries (Classes 56-69)

- ◆ Note that you can enter any class, provided that you meet the age requirements. (e.g. if you are 7 yrs old, you can enter the Under 16 class).

# Hose Produce & Craft Show

## **RULES FOR EXHIBITORS**

- 1 The entry of exhibits to the show is free
- 2 Exhibits with a completed Entry Form will be received between 8.30 and 11 a.m. on the day of the Show.

### **Exhibits will not be accepted after 11.00 a.m. on the day of the Show**

- 3 Exhibits will be finally staged by the Committee
- 4 Exhibits of Vegetables, Fruit and Flower classes must be the *bona fide* property of, and grown by, the Exhibitor
- 5 Exhibits must be new and unused; they should not have been exhibited previously
- 6 Hose Village Hall Committee will take reasonable care with the Exhibits but cannot take responsibility for any damage to them
- 7 Exhibitors must provide their own containers, vases or plates
- 8 **Containers must not show any commercial markings or labels**
- 9 **Photographs must not be mounted**
- 10 Exhibits not to be auctioned may be removed before 3.15 p.m.
- 11 Produce will be judged on Royal Horticultural Society standards
- 12 Judging will be carried out by independent judges
- 13 No unauthorised person will be allowed in the Hall during the judging
- 14 The judges' decision will be final
- 15 Points will be awarded for each class as follows:  
**1<sup>st</sup> – 3 points, 2<sup>nd</sup> – 2 points, 3<sup>rd</sup> – 1 point**
- 16 Prizes will be awarded for each class as follows:  
**1<sup>st</sup> - £1, 2<sup>nd</sup> - 50p, 3<sup>rd</sup> - 25p**
- 17 No Exhibitor will be paid more than one Prize in any one Class.  
No Second or Third Prize will be paid if there are less than four entries in that Class.  
No Third Prize will be paid if there are less than six entries in that Class
- 18 Trophies will be awarded according to points accumulated in certain categories or to the judges' assessment of the quality of the exhibit in other categories.